

Elbit Systems Land Rocket & Missile Systems



Elbit Systems™

Land

PULS™

Precise & Universal Launching System

The PULS™ is a precise and universal launching system designed to meet today's fire support challenges, in terms of responsiveness, vast munition support and platform flexibility.

PULS™ Advantages:

- **Universal:** Capable of firing various types of accurate and free flight rockets by different manufacturers and at a variety of ranges utilizing a Launch Pod Container (LPC) for each rocket/missile type.
- **Autonomous:** The launcher can operate independently in terms of handling a firing mission. Built-in navigation system along with on-board LMC (Launcher Mission Computer) enables the PULS™ to be ready for fire in less than 1 minute and to accurately and effectively engage the specified targets even at ranges that were once solely the role of the air force.
- **Automatic:** Maximum responsiveness utilizing a fully automated launching system, which aims the launcher automatically based on the firing mission data.
- **Firepower:** The launcher carries two LPCs of rockets or missiles, supporting a significant quantity of mission-ready munitions and enabling reduced reload cycles.
- **Platform Flexibility:** The PULS™ launching module can be mounted on various platforms (6X6, 8X8 trucks etc.) with or without an integrated crane based on the end-user's already in-use logistic fleet.



Munitions Portfolio

Guided, Precise Munitions



Range: 35km

> ACCULAR

The ACCULAR is a 122mm precision strike guided rocket, based on an advanced GPS navigation module that includes dedicated laser homing technology. The rocket has an operational range of up to 35km.



Range: 80km

> EXTRA MR

EXTRA MR is a precise, medium-range artillery rocket with a range of up to 80km, based on an advanced GPS navigation module that includes dedicated laser homing technology. The EXTRA MR enables effective strikes on high-payoff targets beyond the ranges of traditional artillery, regardless of weather conditions.

The highly responsive supersonic rocket can hit an 80km target in less than 3 minutes.



Range: 150km

> EXTRA

EXTRA is a precise, long-range artillery rocket with a range of up to 150km. The EXTRA enables effective strikes on high-payoff targets beyond the ranges of traditional artillery, regardless of weather conditions.

The highly responsive supersonic rocket can hit a 150km target in less than 5 minutes, making the EXTRA a preferred solution to conduct precision strikes that were once solely the role of the air force.



Range: 300km

> PREDATOR HAWK

Predator Hawk is a precise, long-range rocket with a range of up to 300km. Its depth capability is effective against a wide range of high-payoff targets across deep battlefield areas, regardless of weather conditions.

The highly responsive supersonic rocket can hit a 300km target in approximately 8 minutes, making the Predator Hawk a preferred solution for precision strikes that were once solely the role of the air force.

Munitions Portfolio

Training and Loitering Munitions



> Loitering Munition

The SkyStriker is a battle proven, electrically powered, seek & strike loitering munition, capable of long-range precise tactical strike.

The SkyStriker can seek targets beyond the visual line-of-sight by loitering over the mission area, locking on the target according to the ground operator's commands and autonomously homing in on the target.

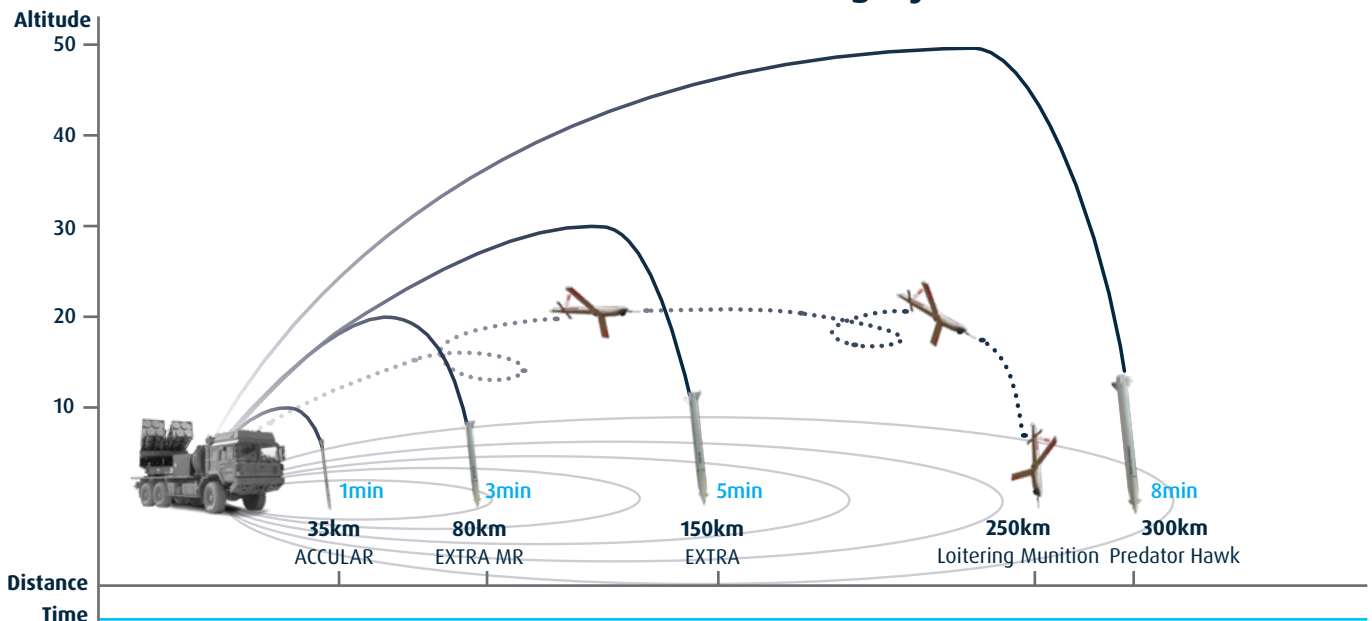
The system is designed for all-terrain operation, including launch from an unprepared surface. Due to its minimal logistic footprint, the system is highly mobile, allowing fast and easy deployment, as well as transportation onboard the PULS™ artillery system or using standard non-tactical vehicles.



> Training Rocket

The 122mm training rocket is an inert free flight rocket designed to train the launcher crew. The training rocket enables realistic live fire training at a range of up to 15km. The training rocket meets the three main guidelines required by most rocket artillery users: simulate the operational munition, safe, and affordable.

Precise & Universal Launching System



Comprehensive Advanced Rocket Artillery Solutions

Elbit Systems has earned an outstanding global reputation for innovation and reliability in solutions for the demanding challenges of the modern and future battlespace. With the acquisition of IMI, Elbit Systems Land Division offers complete battlefield coverage with a high-performance array of advanced, accurate and fast response rocket artillery systems, designed for effective fire support.

Elbit Systems Land's combat-proven rocket artillery solutions support maneuvering forces with precision and effective firepower. The integrative platforms and accurate ammunition provide an operational advantage with improved and powerful impact.

Production capabilities and sophisticated facilities

Elbit Systems' plant and facilities feature advanced production infrastructure encompassing an area of 20,000 square meters and a highly skilled staff. Capabilities cover all aspects of manufacturing, assembly, packing, quality assurance and control, metallurgic, ballistics and full in-house live firing testing.



Dynamic Multi-purpose Rocket Artillery System

Platform Flexibility



Man
6x6



Tatra
6x6



Iveco
8x8 + Integrated Crane



Scania
8x8 + Integrated Crane



Oshkosh
8x8 + Integrated Crane

Universal Ammunition



Loitering Munition
Range: 250km



Predator Hawk
Range: 300km



EXTRA
Range: 150km



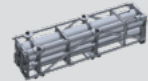
EXTRA MR
Range: 80km



ACCULAR
Range: 35km



Training Rocket
Range: 5-14km



Training POD

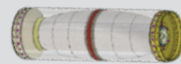
Ammunition Technology



Fuzes - Operational Modes
Point Detonation [PD] Proximity
Penetration Delay Detonation [PDD]



Penetration Warhead



Control Fragmentation Warhead



GPS/Laser Homing Seeker and Navigation System

Supporting Systems



Battery & Battalion Command Post



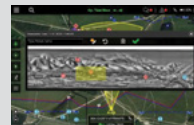
Ammunition Truck



Fire Control System



C4I



Target Acquisition



Training & Simulation



Elbit Systems Land

E-mail: land@elbitsystems.com www.elbitsystems.com

Follow us on